

Adjusting the Eyepiece

It may be necessary to make small adjustments to the magnification of the eyepiece and/or the position of the eyecup in order to get a clear, sharp image. Please note that the edge of the image circle may not be sharp on some phone and eyepiece combinations.

Care & cleaning

Avoid dropping the mount on hard surfaces and take care not to crush the grips or eyepiece clamp when packing in a rucksack or case. To clean the mount, remove excess dirt and dust using compressed air, a blower brush or lint-free cloth. More stubborn marks may be removed using a damp cloth.

Warranty & repair

The mount is guaranteed for up to 2 years under the following conditions:

In the case of defects attributable to faulty processing or materials, we will assume responsibility for material costs and will replace the mount after inspection.

We will accept no liability for damage to your person, any phone and its digital content (including media) used in the mount or to the mount itself caused by incorrect use, or for any repairs or actions which have been carried out by third parties.

This guarantee is in addition and does not affect your statutory rights.

opticon

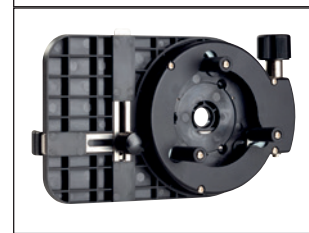
Address: Opticron, Unit 21, Titan Court, Laporte Way, Luton, Bedfordshire, LU4 8EF, UK
Phone: +44 (0)1582 726522 **Fax:** +44 (0)1582 723559 **Email:** sales@opticon.co.uk

opticon

Universal Smartphone Mount

USM-2

User Guide & Guarantee



Thank you for purchasing the Opticron Universal Smartphone Mount 2 (USM-2). Please read the following guide carefully.

Contents

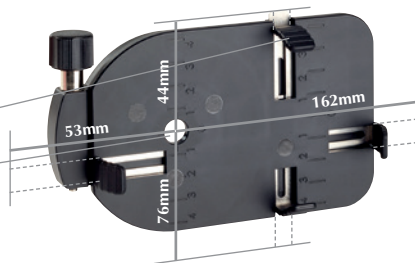
- 1 off Phone Carrier with adjustable grips
- 1 off Foam Pad
- 1 off User Guide & Guarantee

Product Features

Front (Phone side)

Adjustable Clamp x4

Hole for Camera Lens

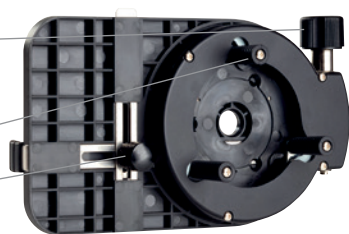


Rear (Eyepiece side)

Eyepiece Clamp
Adjustment Knob.
(Opens and closes
Eyepiece Clamp)

Self-centring Pins x3

Thumbscrew Lock.
(Locks Adjustable Clamp
x4 Phone side)



Attaching your Smartphone

1. Getting Started

If the camera lens is raised out from the body of the phone, use the foam padding to level the phone as it rests on the front of the mount.

2. Fitting

- Loosen the Thumbscrew Lock and extend the Adjustable Clamps far enough to allow you to put your phone on the mount. Squeeze the clamps in until they loosely hold the phone.
- Turn the mount over so you can align the camera lens.
- Holding the phone firmly in place, adjust the clamps again so that they grip the phone and then tighten the thumbscrew.

The rubber-covered clamps are curved so your phone is held securely.

Fitting the USM-2 over your Eyepiece

1. Getting Started

The eyepiece clamp on the rear side of the USM-2 has three rubber-covered arms. These are moved inwards and outwards by rotating the adjustment knob and are self-centring so will automatically align the eyepiece with the smartphone camera lens. The clamp will accommodate any eyepiece with a diameter between 31mm and 55mm and that is at least 20mm deep. Before fitting your adapter ensure the rotating retractable eyecup on your eyepiece is in the down position. If you are using a zoom eyepiece set the magnification to minimum.

2. Fitting

Turn the adjustment knob so that the eyepiece clamp fits loosely over the eyepiece. Place it over the eyepiece such that the adapter plate comes into contact with the end of the eyepiece. Rotate the USM-2 to the desired position (portrait or landscape) and turn the adjustment knob to tighten the eyepiece clamp.

Tips for taking pictures

Once the mount is installed, activate the phone camera according to the manufacturer's instructions. On most phones, a fully automatic mode will be the most effective. Use the zoom function on the phone to reduce the amount of vignetting (the black area around the image) before taking the photo.

Some smartphones will allow you to use the headphone cord as a shutter release thus reducing the amount of shake and vibration.



Portrait: You may need to slightly lower your tripod in order to see the phone screen.



Landscape: This mode is useful when shooting video on some phones.