

50065 DCC adapter - compatibility with Opticron eyepieces

The following list shows which insert (or set of inserts) are required to fit a particular eyepiece. Prices of **recommended eyepieces**: HDF T 40810, HDF T 40937 and HR 40812 are listed in the table below.

50066 ø51	50067 ø45.5	50068 ¹ ø41.5	50069 ² ø33
HDF T 40862	HDF T 40810 HDF T 40937 HR2 40933 HDF T 40872 dis HDF T 40809 HDF 40862 dis HR MM2 40909 ³	HDF 40810 ³ dis HDF 40809 ³ dis HR2 40930 ³ HR2 40931 ³ IS 40918 ³	HR 40812 ³ HR 40813 ³ dis

¹50068 insert only fits in combination with 50067 insert

²50069 insert only fits in combination with 50068 and 50067 inserts

³Remove rubber eyecup before connecting DCC adapter dis - discontinued eyepieces

Accessories

Chosen specifically to compliment the camera, camera lens mount and DCC adapter, the following accessories are included in either the Mini or Maxi kits. They are also available separately.

SD memory 2Gb

Storage 2Gb:

Images

14M (4384x3288 pixels)

S.FINE 272 exp FINE 528 exp

10M (4384x2464 pixels)

S.FINE 359 exp FINE 692 exp

Movies

(1280x720HD) 30fps 20mins



Code: 50072



SLB-1137D 3.7V
1100mAh. Code: 50133



Includes mains and 12v DC in-car charger
and carrier for battery. Code: 50109

Pricing

Code	Model	SRP £ inc VAT
50135	NV100 DCC Mini kit price includes; NV100HD, 50072, 50131, 50065, 50066 & 50067	289.00
50136	NV100 SDL DCC Mini kit price includes; NV100HD, 50072, 50131, 50064	289.00
50137	NV100 DCC Maxi kit price includes; NV100HD, 50073, 50114, 50131, 50133, 50109, 50065, 50066 & 50067	349.00
50138	NV100 SDL DCC Maxi kit price includes; NV100HD, 50073, 50114, 50131, 50133, 50109 & 50064	349.00
50131	Camera lens mount NV100	49.00
50133	Battery SLB-1137D	16.00
50109	Digi Charger + carrier	34.99
50072	Lexar 2Gb SD (or equivalent)	10.99
50073	Lexar 4Gb SD (or equivalent)	14.99
50114	Remote control - NV100	10.99
50064	SDL DCC adapter (41113 + 41123 model)	50.00
50065	DCC adapter	39.00
50066	51mm insert for 50065	9.00
50067	45.5mm insert for 50065	9.00
50068	41.5mm insert for 50065 ¹ 50068 insert only fits in combination with 50067 insert	9.00
50069	33mm insert for 50065 ² 50069 insert only fits in combination with 50068 & 50067 inserts	9.00
Recommended Eyepieces		
40810	HDF T	129.00
40937	HDF T	129.00

OPTICRON PO Box 370, Unit 21, Titan Court, Laporte Way, Luton, Bedfordshire, LU4 8YR, UK
Telephone: 01582 726522 Facsimile: 01582 723559 E-mail: sales@opticron.co.uk

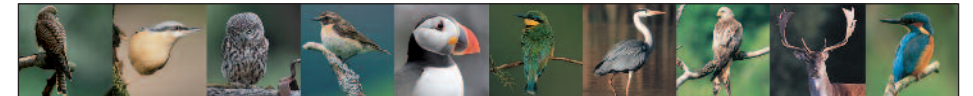


Opticron



Digital Compact Camera Kits for Telephotography

featuring Samsung NV100HD camera with
50064 SDL DCC adapter or 50065 DCC adapter



Product Information & User Guide

including Retail Price List
May 2009

Opticron digital compact camera kits are a high quality, easy to use solution to the problem of choosing a suitable compact camera for high magnification telephotography (digi-scoping).

NV100 kits are available in **Mini** or **Maxi**. The **Mini** kit comprises a Samsung NV100HD camera with 2Gb SD memory card and bespoke camera lens mount plus the option of one of the following:

- DCC adapter and 2 inserts for connection to selected HDF T, HDF, HR2 and HR eyepieces
- SDL DCC adapter for connection to the 40935 SDL eyepiece

Maxi kits include a 4GB SD card, remote control, spare Li-ion rechargeable battery and an AC mains / DC in-car charger.



Product information



Camera fitted with lens mount

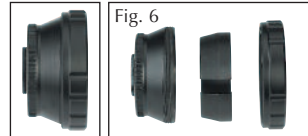


Fig. 6

Samsung NV100HD camera

- 14.7 mega pixel CCD
- Schneider KREUZNACH lens f.6.0~21.6mm
- 3.6x optical zoom
- 35mm equivalent; 28mm to 102mm
- Magnification; 0.56x to 2.04x
- F2.8~F5.9
- TTL auto focus (multi, spot, face)
- Macro: 5~80cm (wide)
- Shutter 1~1/2000
- Exposure
 - Control: Program AE, Metering: Multi, Spot
 - Compensation: $\pm 2EV$ 1/3 EV steps
 - ISO: auto, 80, 100, 200, 400, 800, 1600, 3200
- Shooting
 - 16 scene modes, continuous, high speed & multiple capture
- AVI MPEG-4 1280x720HD 30 fps
- 3.0" hVGA Touch Screen
- WxHxD: 94.9x59.5x19.9mm
- Weight: 138g (w/o battery & card)

Supplied complete with 3.7V Li-ion rechargeable battery, charger and software

50064 SDL DCC adapter

(41113 + 41123 model)
This adapter comprises an aluminium tube & locking ring fitted with a delrin insert manufactured to the diameter of the 40935 SDL eyepiece. Camera side, the adapter is fitted with a 28mm thread for connection to the lens mount supporting the camera. Eyepiece side, the push-fit connection over the 40935 SDL eyepiece has anti-clockwise lock down. **Important note:** To get the best image adjust magnification setting on the eyepiece to; HR 66 38x, HR 80 48x, GS 665 32x, GS 815, ES 80 40x

50065 DCC adapter

The DCC adapter comprises an aluminium tube & locking ring that can be fitted with a number of delrin inserts of different diameters. Camera side, the DCC adapter features a 28mm thread connection to the lens mount supporting the camera. Eyepiece side, the push-fit connection over specific HDF or HR eyepieces has anti-clockwise lock down. Inserts are available in a choice of internal diameters to suit different eyepieces;

- 50066 $\varnothing 51\text{mm}$
- 50067 $\varnothing 45.5\text{mm}$
- 50068 $\varnothing 41.5\text{mm}^1$
- 50069 $\varnothing 33\text{mm}^2$

¹50068 insert only fits in combination with 50067 insert.

²50069 insert only fits in combination with 50068 and 50067 inserts.

User instructions

1. Choosing an eyepiece (50065 DCC adapter only)

For best overall image quality and the widest choice of magnifications at which a full frame image is obtained use any of the following eyepieces: **HDF T 40810**, **HDF T 40937** with 50067 insert or HR 40812 with 50069 in combination with 50068 and 50067 inserts. Depending on the focal length and objective dia. of your telescope, other suitable eyepieces may include; HDF T 40862, HDF T 40872, HDF T 40809, HR2 40933 and HR2 40930.

2. Initial setup

Before connecting everything together, set up your telescope and eyepiece on a tripod as you would for viewing, making sure your chosen eyepiece is screwed firmly into position. Focus on an object in the normal way until the image being viewed comes into sharp focus. Twist-type eyecups should be in the 'down' position and fold down rubber eyecups should be removed from the eyepiece.

3. Preparing the camera and lens mount

- Loosen the locking ring on the lens mount and slide the mount over the lens housing on the camera until it fits flush against the front of the camera body. [Fig. 1]
- Holding the camera and locking ring section of the lens mount in one hand, turn the main tube of the lens mount clockwise until the mount is securely tightened. [Fig. 2]

4. Preparing and fitting your chosen adapter

- Assemble the component parts of your chosen adapter as illustrated on previous page. [Fig. 6]
- Screw the adapter onto the camera lens mount. [Fig. 3]
- The camera is now ready to attach to the viewing eyepiece. [Fig. 4]

5. Fitting the combined assembly to the telescope eyepiece [Fig. 5]

- Place assembly over the eyepiece and push down until the internal wall of the adapter comes into contact with the end of the eyepiece. [a]
- Hold the main section of the adapter secure and turn the locking ring anti-clockwise until tight making sure the camera remains horizontal. [b]
- Turn the camera ON, making sure the flash is switched off before taking photographs. For additional guidance on how to operate the NV100HD, please read the instructions supplied with the camera.

Tips for taking pictures

- The NV100HD has no conventional viewfinder so images are composed using the LCD monitor. When the camera is turned on the LCD monitor will show a single rounded picture of the image you originally set your scope and eyepiece to. Once this single rounded picture is obtained you can adjust the zoom function to eliminate any vignetting and make any fine focus adjustments using the telescope.
- Set shooting mode to either P or M giving you access to the majority of manual functions including; Shooting mode (single, high speed and Mcapture), Metering, Flash ON/OFF, ISO settings and Exposure Compensation.



Fig. 1

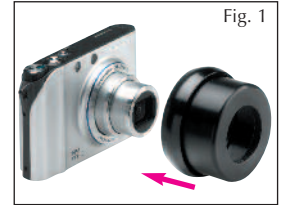


Fig. 2



Fig. 3

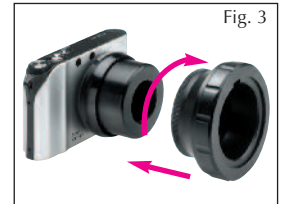


Fig. 4



Fig. 5

